

SHIELDTITE® MIL ZERO HALOGEN SHIELDING MIL-PRF-24758A(SH) ASSEMBLY

LFMC SHIELDTITE® MIL
EMI/EMP RESISTANT FLEXIBLE CONDUIT
HALOGEN FREE



DESCRIPTION

- Flexible bronze core liquid tight conduit
- Designed for applications needing superior EMI and EMP shielding
- Uses standard liquid tight connectors for easy installation
- Durable, sunlight resistant, flame retardant, low smoke and Zero Halogen TPU jacket resists heat, oil and chemical breakdown
- Meets MIL-STD-167/1, MILITARY STANDARD: MECHANICAL VIBRATIONS OF SHIPBOARD EQUIPMENT (TYPE I-ENVIRONMENTAL)
- Meets MIL-PRF-24758A(SH) when connected using SEALTITE® AISI-316 Halogen Free fittings
- Conduit and fittings are marked with 495 for IEC 60614 appendix A stress and temperature range

SPECIFICATIONS

- Bronze core with liquid tight TPU jacket
- Color: Gray
- Temp. range: -40°F to +257°F (-40°C to +125°C)
- UV (sunlight) and corrosion resistant
- Special bronze core provides high-level shielding protection
- Meets MIL-STD-1310H
- Provides shielding effectiveness of 81 dB-119 dB at 1 kHz to 1 GHz

APPLICATIONS

- Applications where high shielding is required
- Military, power generation and communications



Interlocked Design
3/8" - 3"



Trade Size (mm)	Item ID	Std. Pkg. (feet)	Inside Diameter (inches)		Outside Diameter (inches)		Bend Radius (inches)	Weight (lbs/100 ft)
			Min	Max	Min	Max		
3/8" (12)	450200-0186	Available in Random Lengths	0.484	0.505	0.690	0.710	3.0	24
1/2" (16)	450202-0186		0.622	0.642	0.820	0.840	3.0	28
3/4" (21)	450204-0186		0.820	0.835	1.030	1.050	4.0	42
1" (27)	450206-0186		1.041	1.066	1.290	1.315	4.0	56
1-1/4" (35)	450208-0186		1.380	1.395	1.630	1.660	4.5	75
1-1/2" (41)	450210-0186		1.575	1.600	1.865	1.900	7.0	96
2" (53)	450212-0186		2.020	2.045	2.340	2.375	9.5	125
2-1/2" (63)	450214-0186		2.480	2.505	2.840	2.875	12.0	165
3" (78)	450216-0186		3.070	3.100	3.460	3.500	13.5	211

FITTINGS FINDER



IP 66/67 with approved fittings

METALLIC SEALTITE®

S
H
I
E
L
D
T
I
T
E
®
M
I
L

NPT AISI-316 FITTINGS SHIELDING MIL-PRF-24758A(SH) ASSEMBLY

LFMC SEALTITE® COMPACT FITTINGS
STAINLESS STEEL AISI-316 PREMIUM NPT



DESCRIPTION

- The compact design is ideal for tight spaces: 20% smaller and 35% lighter than standard SEALTITE® fittings
- Superior Stainless 316 corrosion resistance, strength and durability
- IP 66/67 rated when installed with approved conduit and tightened to UL-514B/CSA C22.2 18.3 torque specifications
- Approved for both exposed and concealed locations connected using SEALTITE® AISI-316 fittings
- Halogen Free fittings
- Conduit and fittings are marked with 495 for IEC 60614 appendix A stress and temperature range

SPECIFICATIONS

- AISI-316 body with AISI-304 Ferrule, a lock nut and PA6 clamping ring
- Each fitting has a sealing ring and lock nut
- Color: Metallic
- Temp. range: -40°F to +257°F (-40°C to +125°C)
- cULus 514B Approved DWTT.E234207, complies with NEMA standard FB-1
- Meets MIL-STD-167/1, MILITARY STANDARD: MECHANICAL VIBRATIONS OF SHIPBOARD EQUIPMENT (TYPE I-ENVIRONMENTAL)
- Meets MIL-PRF-24758A(SH) on SHIELDTITE® MIL conduit

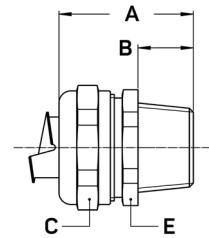
APPLICATIONS

- Fitting for metallic flexible conduit
- Premium Stainless 316 for the best corrosion resistance.
- Compact design for tight spaces
- Suitable for hazardous locations per NEC Articles

STRAIGHT

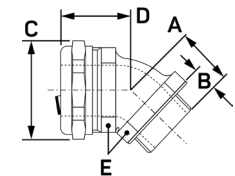


Trade Size	Item ID	Min. Int. Bore (mm)	Dimensions (inches)				KO Size NPT	Weight (lbs/100)	Std. Pkg.
			A	B	C	E			
3/8"	71411292ITMS	11.0	1.259	0.472	1.023	0.944	1/2"	10.8	10
1/2"	71411692ITMS	14.5	1.388	0.472	1.141	1.063	1/2"	12.1	10
3/4"	71412092ITMS	19.4	1.378	0.472	1.378	1.299	3/4"	17.2	10
1"	71412692ITMS	24.7	1.456	0.511	1.771	1.732	1"	30.6	5
1-1/4"	71413592ITMS	33.3	1.653	0.590	2.086	2.047	1-1/4"	41.0	4
1-1/2"	71414092ITMS	38.0	1.889	0.630	2.440	2.362	1-1/2"	61.7	2
2"	71415092ITMS	49.0	2.126	0.748	2.992	2.834	2"	97.0	2



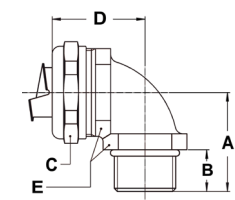
45 DEGREE

Trade Size	Item ID	Min. Int. Bore (mm)	Dimensions (inches)					KO Size NPT	Weight (lbs/100)	Std. Pkg.
			A	B	C	D	E			
3/8"	71421292ITMS	11.0	0.945	0.551	1.114	1.102	0.944	1/2"	19.2	10
1/2"	71421692ITMS	14.5	0.984	0.551	1.244	1.181	1.063	1/2"	22.3	10
3/4"	71422092ITMS	19.4	1.063	0.551	1.504	1.299	1.299	3/4"	36.8	4
1"	71422692ITMS	24.7	1.260	0.630	1.949	1.496	1.653	1"	65.3	5
1-1/4"	71423592ITMS	33.3	1.417	0.630	2.086	1.535	2.047	1-1/4"	95.2	2
1-1/2"	71424092ITMS	38.0	1.535	0.709	2.441	1.811	2.362	1-1/2"	131.2	2
2"	71425092ITMS	49.0	1.732	0.787	2.992	2.087	2.834	2"	206.4	2



90 DEGREE

Trade Size	Item ID	Min. Int. Bore (mm)	Dimensions (inches)					KO Size NPT	Weight (lbs/100)	Std. Pkg.
			A	B	C	D	E			
3/8"	71451292ITMS	11.0	1.063	0.472	1.023	1.260	0.944	1/2"	19.2	10
1/2"	71451692ITMS	14.5	1.181	0.472	1.141	1.338	1.063	1/2"	22.3	10
3/4"	71452092ITMS	19.4	1.338	0.472	1.378	1.574	1.299	3/4"	36.8	4
1"	71452692ITMS	24.7	1.614	0.511	1.771	1.929	1.653	1"	65.3	5
1-1/4"	71453592ITMS	33.3	1.811	0.511	2.086	1.968	2.047	1-1/4"	95.2	2
1-1/2"	71454092ITMS	38.0	2.204	0.511	2.441	2.244	2.362	1-1/2"	131.2	2
2"	71455092ITMS	49.0	2.441	0.630	2.992	2.677	2.834	2"	206.4	2



IP 66/67 with approved conduit